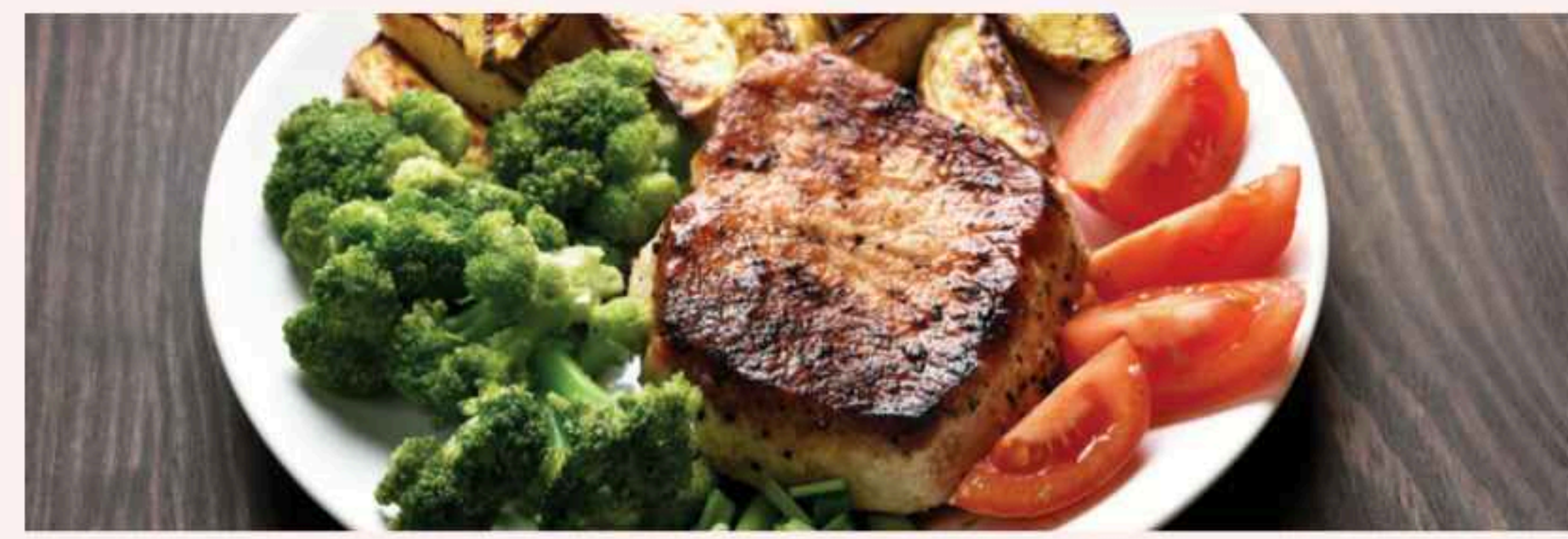


MEAT - DELI - PACKAGED - SEAFOOD



USDA Select Beef
Boneless Top Round Steak

\$4.49
lb



Fresh Family Pack
Boneless Center Cut Pork Chops

\$2.49
lb



16 oz. Pkg.
Sugardale
Sliced Bacon

\$4.99



12-14 oz. Pkg.
Hillshire Farm
Kielbasa

\$3.99



Häns Kissle
Red Bliss
Potato Salad

\$3.99
lb



Häns Kissle
Macaroni Salad

\$2.99
lb



Häns Kissle
Cole Slaw

\$2.99
lb

PRODUCE



10 lb. Bag - Maine
Country Roots
White Potatoes

\$4.99



Sweet
Potatoes

79¢
lb



12 oz. Pkg. Seedless
Sunset
Mini Cucumbers

\$1.99



(207) 445-2511
US Route 32 & 105
Windsor, Maine 04363

Sale Dates

Sun. Dec. 22, to
Sat. Dec. 28, 2024



General Store

Store Hours

OPEN 7 DAYS
A WEEK
Sunday 8AM - 5PM
Mon.- Sat. 7AM-6PM

Christmas Eve close @ 6PM
Closed Christmas Day
If We Ain't Got It
You Don't Need It!

CHECK US OUT
ON FACEBOOK &
LIKE US TODAY!

GRAB THESE GREAT DEALS!



USDA Select Beef
Boneless
Top Round Roast

\$3.99
lb



Fresh Boneless
Center Cut
Pork Roast

\$1.99
lb



Shank or Butt Portion
Sugardale
Hams

\$1.59
lb



Jumbo Boneless
Chicken
Breast

\$1.99
lb



Frozen-10 oz. Pkg. 60/80 ct.
Sea Best
Shrimp Ring

\$6.99



Deli Sliced
New England
Traditions
Pepper Jack Cheese

\$5.99
lb

11.04 oz.
Swiss Miss
Hot Cocoa
Mix

\$2.69



16-24 oz.
Ragu
Pasta Sauce

\$2.19



6 oz.
Stove Top
Stuffing Mix

\$2.19



4-5.7 oz.
Knorr
Rice or
Pasta Sides

\$1.39



3.5-13.7 oz.
Nabisco
Crackers

\$3.29



48 oz. Sherbet or
Friendly's
Ice Cream

\$4.49



We reserve the right to limit quantities & correct typographical errors. Illustrations are for design purposes only. Items are while supplies last and no rain checks. Due to current market conditions, item retail may change and products may become unavailable unexpectedly.

GROCERY - DAIRY - FROZEN

25.4 oz.
Martinelli's
Sparkling Cider

\$3²⁹
Plus Dep



6 Double Rolls
Select-A-Size
Bounty Essentials
Paper Towels

\$8⁹⁹



20-48 ct. Plates or
Dixie Ultra
Paper Bowls

\$3⁴⁹



22.6-25.9 oz.
Folgers
Ground Coffee

\$10⁹⁹



128 oz.
AriZona
Drinks

3/\$10
Plus Dep



6-8 oz. Bars, Cuts or Shredded
Cabot Creamery
Cheese

\$2⁷⁹



24-32 oz.
Pearl Milling Company
Pancake & Waffle Mix
or Syrup

\$3⁹⁹



12-14 oz.
General Mills
Chex Cereal

\$3⁹⁹



15 oz.
Wish-Bone
Dressing

\$2⁹⁹



32 oz.
Hood
Country Creamer

2/\$3



7 oz. Instant
Cabot
Whipped Cream

\$2⁵⁹



12 oz. Big & Flaky
Pillsbury
Crescents

\$3¹⁹



6 oz.
Pearls
Pitted Ripe
Olives

2/\$5



17.5 oz.
Betty
Crocker
Cookie Mix

\$2⁵⁹



16 oz.
Argo
Corn Starch

\$2²⁹



64 oz.
Almond
Breeze
Almondmilk

\$2⁹⁹



10-10.8 oz.
Birds Eye
Steamfresh
Vegetables

\$1⁵⁹



16 oz.
Daisy
Sour Cream

\$2⁴⁹



11.5-12 oz.
Hershey's
Baking
Chips

\$3¹⁹



8 oz.
General Mills
Chex Mix

\$2⁸⁹



7 oz.
Tate's Bake
Shop
Cookies

\$4⁹⁹



48 oz.
Rhodes
Dinner Rolls

\$4⁴⁹



48 oz. 3 Pack
Rhodes
White Bread
Dough

\$3⁹⁹



25.5-30.4 oz.
Edwards
Creme Pies

\$6⁹⁹

